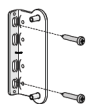


CELLULAR FLEX CHAIN HOLD INSTALLATION INSTRUCTIONS

Hardware Included:



Tensioner



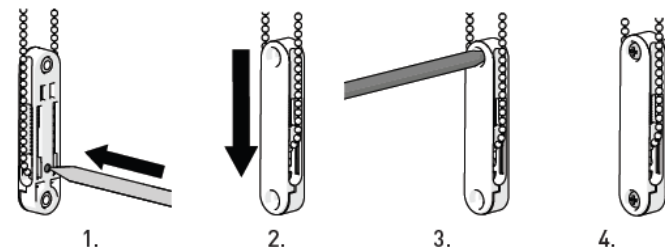
Optional Adapter

Tools Required:

- Phillips Screwdriver
- Pencil

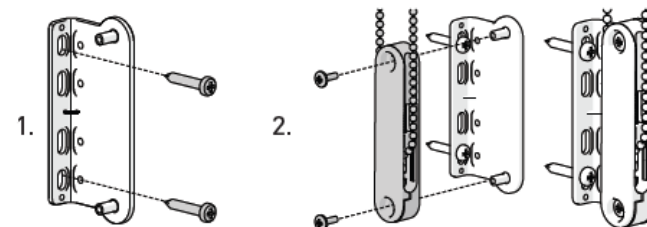
Installation Inside Window Frame

1. Use an enclosed screw or small pointed tool to push the locking pin on the tensioner (at least 50% of the way) to unlock.
2. With the locking pin pushed in, pull down on the tension device to apply tension.
3. With tension applied, mark the screw hole with pencil.
4. Screw tensioner into window frame or trim.



Installation Outside Window Frame

1. Install adapter bracket first, using enclosed large screws. (Pro Tip: Follow steps 1-3 of Inside Window Frame Installation to help determine approximate height for bracket placement.)
2. Install tensioner into adapter bracket with enclosed small screws.



Do not cut the chain loop.
Shades cannot operate if the chain is cut and spliced.

NOTE: These instructions are designed to accompany the installation instructions for your specific shade type.

CELLULAR FLEX CHAIN HOLD INSTALLATION INSTRUCTIONS

Assembly (Only required if replacing the tensioner)

Flex Chain Hold should arrive pre-installed on the chain loop.

1. Place the bead chain on the bottom groove of the tensioner base.
2. Use a small pointed tool to push the locking pin on the tension device to unlock, then pull up on the chain to compress the spring.
3. Rotate and snap-fit cover and base together. (Pro Tip: Wrap the tensioner in a cloth and gently tap the cover with a hammer or mallet to snap it together with the base.)

